

COMET GLOBAL  
PREMIER FOOD SERVICE EQUIPMENT



**COMET GLOBAL**  
PREMIER FOOD SERVICE EQUIPMENT



+971 457 211 85



CLOVER BAY TOWER, 4TH FLOOR  
BUSINESS BAY, DUBAI, UAE,

[www.cometglobal-ae.com](http://www.cometglobal-ae.com)



[info@cometglobal-ae.com](mailto:info@cometglobal-ae.com)

[www.cometglobal-ae.com](http://www.cometglobal-ae.com)

Comprehensive Solutions

**32**  
years of experience

CG

**CG COMET GLOBAL  
PREP LINE**

CG

Maximize preparation space in your kitchen and store more with stainless steel preparation neutral pieces, that help organize your kitchen and streamline food prep operations, restaurant prep tables, cupboards sink units and many more are valuable pieces of equipment for your establishment.



**COMET GLOBAL  
PREP LINE**

## Pick up counter

Open Cabinet & Cabinet with Sliding Doors

**All Body Material** : Stainless Steel AISI 304

**Additional Features** :- Supplied with adjustable feet  
- Two Sliding Door



Open Doors Code	Dimensions	Close Doors Code
CGPN1073M	100x40x70	CGPN1084M
CGPN1074M	110x40x70	CGPN1085M
CGPN1075M	120x40x70	CGPN1086M
CGPN1076M	130x40x70	CGPN1087M
CGPN1077M	140x40x70	CGPN1088M
CGPN1078M	150x40x70	CGPN1089M
CGPN1079M	160x40x70	CGPN1090M
CGPN1080M	170x40x70	CGPN1091M
CGPN1081M	180x40x70	CGPN1092M
CGPN1082M	190x40x70	CGPN1093M
CGPN1083M	200x40x70	CGPN1094M

## Wall Mounted Cabinet

Open Cabinet & Cabinet with Sliding Doors

**All Body Material** : Stainless Steel AISI 304

**Control System** : German-made adjustable Thermostat

**Additional Features** :- Supplied with adjustable feet

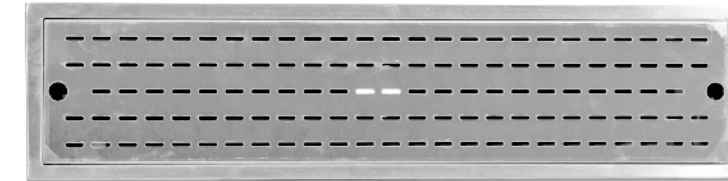


Open Doors Code	Dimensions	Close Doors Code
CGPN1095M	100x40x70	CGPN1106M
CGPN1096M	110x40x70	CGPN1107M
CGPN1097M	120x40x70	CGPN1108M
CGPN1098M	130x40x70	CGPN1109M
CGPN1099M	140x40x70	CGPN1110M
CGPN1100M	150x40x70	CGPN1111M
CGPN1101M	160x40x70	CGPN1112M
CGPN1102M	170x40x70	CGPN1113M
CGPN1103M	180x40x70	CGPN1114M
CGPN1104M	190x40x70	CGPN1115M
CGPN1105M	200x40x70	CGPN1116M

## Drain Grill

Floor Drain Grill / with heavy duty grating top

**All Body Material** : Stainless Steel AISI 304



Model	Dimensions	Details	Code
Floor Drain Grill	100x25x12	top shall be perforated cover 2mm, 76mm inch Drain pipe	CGCE0125M

## Hood Unit Box

Exhaust Only

**All Body Material** : Stainless Steel AISI 304

Top Made from AISI 430

**Additional Features** :- Supplied with Grease filters, oil Collection Container  
Complete with Vapor proof lighting and Electrical Connections



Dimensions	Code
100x100x45	CGPN1117M
140x100x45	CGPN1118M
180x100x45	CGPN1119M
220x100x45	CGPN1120M
260x100x45	CGPN1121M
300x100x45	CGPN1122M

## Hood Unit Box

Fresh & Exhaust

**All Body Material** : Stainless Steel AISI 304  
Top Made from AISI 430

**Additional Features** :- Supplied with Grease filters, oil Collection  
Container Complete with Vapor proof lighting  
and Electrical Connections



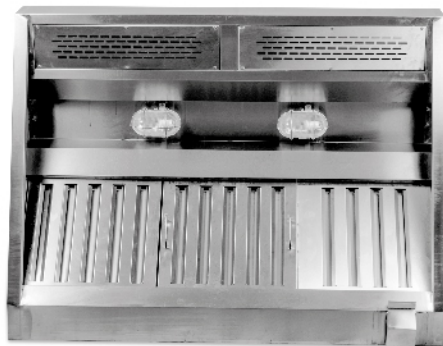
Dimensions	Code
100x100x45	CGPN1123M
140x100x45	CGPN1124M
180x100x45	CGPN1125M
220x100x45	CGPN1126M
260x100x45	CGPN1127M
300x100x45	CGPN1128M

## Hood Unit Island

Fresh & Exhaust

**All Body Material** : Stainless Steel AISI 304  
Top Made from AISI 430

**Additional Features** :- Supplied with Grease filters, oil Collection  
Container Complete with Vapor proof lighting  
and Electrical Connections



Dimensions	Code
100x220x45	CGPN1129M
140x220x45	CGPN1130M
180x220x45	CGPN1131M
220x220x45	CGPN1132M
260x220x45	CGPN1133M
300x220x45	CGPN1134M

## Wall Mounted Hood Unit

Exhaust Only

**All Body Material** : Stainless Steel AISI 304  
Top Made from AISI 430

**Additional Features** :- Supplied with Grease filters, oil Collection  
Container Complete with Vapor proof lighting  
and Electrical Connections



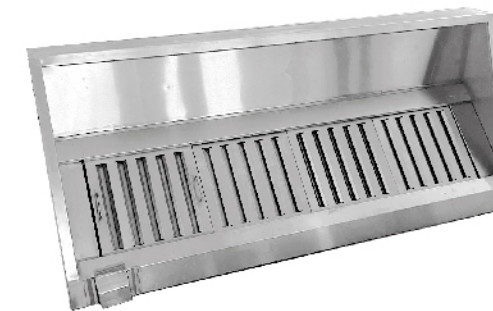
Dimensions	Code
100x100x45	CGPN1135M
140x100x45	CGPN1136M
180x100x45	CGPN1137M
220x100x45	CGPN1138M
260x100x45	CGPN1139M
300x100x45	CCCGPN1140M

## Wall Mounted Hood Unit

Fresh & Exhaust

**All Body Material** : Stainless Steel AISI 304  
Top Made from AISI 430

**Additional Features** :- Supplied with Grease filters, oil Collection  
Container Complete with Vapor proof lighting  
and Electrical Connections



Dimensions	Code
100x110x45	CGPN1141M
140x110x45	CGPN1142M
180x110x45	CGPN1143M
220x110x45	CGPN1144M
260x110x45	CGPN1145M
300x110x45	CGPN1146M

## Pass Thru Shelves

Heated

**All Body Material** : Stainless Steel AISI 304

**Additional Features** :- Top Surface Thickness 1 mm Lower Surface  
- Thickness 1 mm - supplied with food warmer  
for lower surface power 1.2Kw,220Volt,50Hz



Dimensions	Code
100x40x70	CGPN0678M
110x40x70	CGPN0679M
120x40x70	CGPN0680M
130x40x70	CGPN0681M
140x40x70	CGPN0682M
150x40x70	CGPN0683M
160x40x70	CGPN0684M
170x40x70	CGPN0685M
180x40x70	CGPN0686M
190x40x70	CGPN0687M
200x40x70	CGPN0688M

## Pass Thru Shelves

Neutral

**All Body Material** : Stainless Steel AISI 304

**Additional Features** :- Top Surface Thickness 1 mm Lower Surface  
- Thickness 1 mm



Dimensions	Code
100x40x70	CGPN0111M
110x40x70	CGPN0112M
120x40x70	CGPN0113M
130x40x70	CGPN0114M
140x40x70	CGPN0115M
150x40x70	CGPN0116M
160x40x70	CGPN0117M
170x40x70	CGPN0118M
180x40x70	CGPN0119M
190x40x70	CGPN0120M
200x40x70	CGPN0121M

## Shelving Unit

Perforated Shelving Unit

**All Body Material** : Stainless Steel AISI 304

**Additional Features** :- shelves thickness 1.2 mm Perforated made  
- from AISI 304 supplied with adjustable feet



Dimensions	Code
180x40x115	CGPN0638M
180x40x140	CGPN0639M
180x40x90	CGPN0637M

## Shelving Unit

Solid Shelving Unit

**All Body Material** : Stainless Steel AISI 304

**Additional Features** :- shelves thickness 1.2 mm Brackets thickness  
- 1.2 mm Assembly Bolts made from AISI 304  
supplied with adjustable feet



Dimensions	Code
180x40x115	CGPN0638M
180x40x140	CGPN0639M
180x40x90	CGPN0637M

## Wall Mounted Shelves

Perforated shelves

- All Body Material** : Stainless Steel AISI 304
- Additional Features** :- Top Surface Thickness 1.2 mm Perforated  
- Supplied with 2 wall mounted brackets



Dimensions	Code
100x40x4	CGPN0051M
110x40x4	CGPN0062M
120x40x4	CGPN0032M
130x40x4	CGPN0043M
140x40x4	CGPN0052M
150x40x4	CGPN0063M
160x40x4	CGPN0033M
170x40x4	CGPN0044M
180x40x4	CGPN0053M
190x40x4	CGPN0064M
200x40x4	CGPN0034M

## Wall Mounted Shelves

Solid Shelves

- All Body Material** : Stainless Steel AISI 304
- Additional Features** :- Top Surface Thickness 1.2 mm Perforated  
- Supplied with 2 wall mounted brackets



Dimensions	Code
100x40x4	CGPN0100M
110x40x4	CGPN0081M
120x40x4	CGPN0101M
130x40x4	CGPN0082M
140x40x4	CGPN0102M
150x40x4	CGPN0645M
160x40x4	CGPN0103M
170x40x4	CGPN0084M
180x40x4	CGPN0104M
190x40x4	CGPN0085M
200x40x4	CGPN0105M

## Sink Unit

Single, Double, Triple Sink Unit

- All Body Material** : Stainless Steel AISI 304  
Top Surface Thickness 1.5 mm supplied with back
- Bowls Dimensions** : splash 13 cm supplied with Bowl 50x50x30
- Additional Features** : supplied with adjustable feet



Double (2) Bowl

Dimensions	Code
120x70x85	CGPE0037M
130x70x85	CGPN0010M
140x70x85	CGPN0011M
150x70x85	CGPN0012M
160x70x85	CGPN0013M
170x70x85	CGPN0014M
180x70x85	CGPN0015M
190x70x85	CGPE0038M
200x70x85	CGPE0039M
210x70x85	CGPE0040M
220x70x85	CGPE0041M
230x70x85	CGPE0042M
240x70x85	CGPE0043M
250x70x85	CGPE0044M
260x70x85	FGPE0045M



Single (1) Bowl

Dimensions	Code
70x70x85	CGPN0001M
80x70x85	CGPN0002M
90x70x85	CGPN0003M
100x70x85	CGPN0004M
110x70x85	CGPN0005M
120x70x85	CGPN0006M
130x70x85	CGPN0007M
140x70x85	CGPN0008M



Triple (3) Bowl

Dimensions	Code
180x70x85	CGPE0013M
190x70x85	CGPN0017M
200x70x85	CGPN0018M
210x70x85	CGPE0049M
220x70x85	CGPE0050M
230x70x85	CGPE0051M
240x70x85	CGPE0052M
250x70x85	CGPE0053M

## Work Table Back Splash

Work Table With shelf

**All Body Material** : Stainless Steel AISI 304

**Additional Features** :- Top Surface Thickness 1.5 mm with Supports  
- lower Self thickness 1 mm supplied with with adjustable feet



Dimensions	Code
100x70x85	CGPN0423M
110x70x85	CGPN0424M
120x70x85	CGPN0425M
130x70x85	CGPN0426M
140x70x85	CGPN0427M
150x70x85	CGPN0428M
160x70x85	CGPN0429M
170x70x85	CGPN0430M
180x70x85	CGPN0431M
190x70x85	CGPN0432M
200x70x85	CGPN0433M

## Work Table Central

Work Table With shelf

**All Body Material** : Stainless Steel AISI 304

**Additional Features** :- Surface Thickness 1.5 mm with Supports lower Self  
thickness 1 mm supplied with 4 inch caster wheel



Dimensions	Code
100x70x85	CGPN0528M
110x70x85	CGPN0529M
120x70x85	CGPN0530M
130x70x85	CGPN0531M
140x70x85	CGPN0532M
150x70x85	CGPN0533M
160x70x85	CGPN0534M
170x70x85	CGPN0535M
180x70x85	CGPN0536M
190x70x85	CGPN0537M
200x70x85	CGPN0538M

## Work Table Back Splash

Work Table Without shelf

**All Body Material** : Stainless Steel AISI 304

**Additional Features** :- Top Surface Thickness 1.2 mm Perforated  
- Supplied with 2 wall mounted brackets



Dimensions	Code
100x70x85	FGPN0444M
110x70x85	FGPN0445M
120x70x85	FGPN0446M
130x70x85	FGPN0447M
140x70x85	FGPN0448M
150x70x85	FGPN0449M
160x70x85	FGPN0450M
170x70x85	FGPN0451M
180x70x85	FGPN0452M
190x70x85	FGPN0453M
200x70x85	FGPN0454M

## Work Table Central

Work Table Without shelf

**All Body Material** : Stainless Steel AISI 304

**Additional Features** :- Top Surface Thickness 1.5 mm with Supports  
- supplied with adjustable feet



Dimensions	Code
100x70x85	CGPN0465M
110x70x85	CGPN0466M
120x70x85	CGPN0467M
130x70x85	CGPN0468M
140x70x85	CGPN0469M
150x70x85	CGPN0470M
160x70x85	CGPN0471M
170x70x85	CGPN0472M
180x70x85	CGPN0473M
190x70x85	CGPN0474M
200x70x85	CGPN0475M

## Work Table Marble Top

Work Table With shelf

**All Body Material** : Stainless Steel AISI 304

**Additional Features** : lower Shelf thickness 1 mm Top surface shall be Granite 4 cm (not included) supplied with adjustable feet



Dimensions	Code
120x70x85	CGPN0397M
140x70x85	CGPN0399M
160x70x85	CGPN0401M
180x70x85	CGPN0403M
200x70x85	CGPN0405M
220x70x85	CGPN0407M
240x70x85	CGPN0409M
260x70x85	CGPN0411M
280x70x85	CGPN0413M

## Work Table Marble Top

Work Table Without shelf

**All Body Material** : Stainless Steel AISI 304

**Additional Features** : lower Shelf thickness 1 mm Top surface shall be Granite 4 cm (not included) supplied with adjustable feet



Dimensions	Code
120x70x85	CGPN0397M
140x70x85	CGPN0399M
160x70x85	CGPN0401M
180x70x85	CGPN0403M
200x70x85	CGPN0405M
220x70x85	CGPN0407M
240x70x85	CGPN0409M
260x70x85	CGPN0411M
280x70x85	CGPN0413M

## Heated Trolley

Single & Double Doors

**All Body Material** : Stainless Steel AISI 304

**Additional Features** :- Pushing Hands & Anti Collision Rubber  
- Supplied with adjustable feet



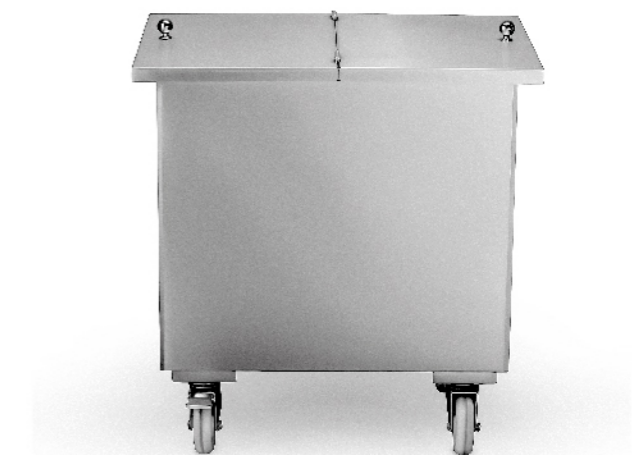
Model	Dimensions	Details	Code
Single Door	95x82.5x170	Fan Power: 1.7kw supplied with 6 Inch local made caster wheel	CGPN0004M
Double Doors	155x82.5x175	Fan Power: 2kw supplied with 8 Inch local made caster wheel	CGPE0037M

## Flour & Sugar Trolley

Neutral Trolley

**All Body Material** : Stainless Steel AISI 304

**Additional Features** : With thickness 1.2mm  
Supplied with 2 Hinged Doors  
Supplied with 3 inch caster wheel



Model	Dimensions	Code
Flour & Sugar Trolley	47x67x70cm With thickness 1.2mm	CGTT0028M



## 16-Gn Trolley

Neutral Trolley

**All Body Material** : Stainless Steel AISI 304

**Additional Features** : Supplied with 4 inch caster wheel Heavy Duty with Brakes Cap: 8 GN 1/1 The Not including GN bowls

Dimensions	Code
59.5x36x150cm	CGTT4902M

## 18-Gn Trolley

Neutral Trolley

**All Body Material** : Stainless Steel AISI 304

**Additional Features** : Supplied with 4 inch caster wheel Heavy Duty with brakes Cap: 18 GN 1/2 The Not including GN bowls

Dimensions	Code
47x67x70cm	CGTT0002M

## Tray Trolley 16Lvs

Neutral Trolley

**All Body Material** : Stainless Steel AISI 304

**Additional Features** : Supplied with 4 inch caster wheel Heavy Duty with brakes Cap: 16 tray 60x80 Not including trays

Dimensions	Code
66x83.5x170cm	CGTT4929M

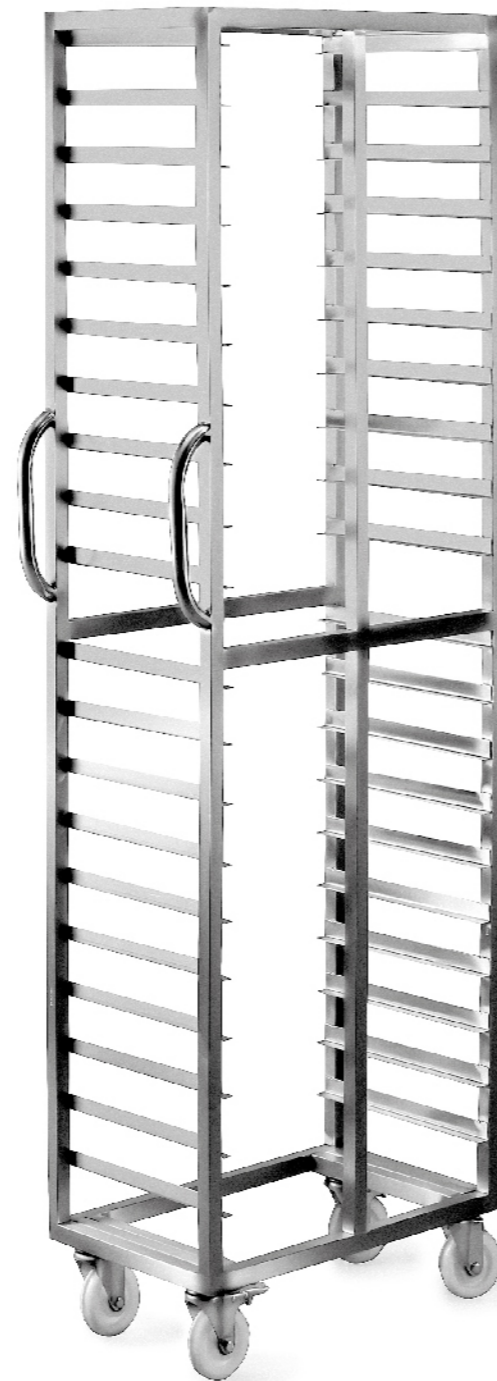
## Tray Trolley 18Lvs

Neutral Trolley

**All Body Material** : Stainless Steel AISI 304

**Additional Features** : Supplied with 4 inch caster wheel Heavy Duty with brakes Cap: 18 GN 1/2 The Not including GN bowls

Dimensions	Code
59.5x68x180cm	CGTT4893M



## Meat Hinged Trolley

Neutral Trolley

**All Body Material** : Stainless Steel AISI 304

**Additional Features** : supplied with 4 inch caster wheel Heavy Duty with brakes

Dimensions	Code
150x60x180	CGTT4894M

## Plate Dispenser

Neutral Trolley

**All Body Material** : Stainless Steel AISI 304

**Additional Features** : Power 300watt/220V/50Hz , Capacity of plates 35 plate with Diameter 20,25,30 according to plate size

Dimensions	Code
43x43x75cm	CGTT4902M

## Rack Trolley

Neutral Trolley

**All Body Material** : Stainless Steel AISI 304

**Additional Features** : Thickness 1.2 mm supplied with 3 inch caster wheel

Dimensions	Code
90x51x51cm	CGTT0005M

## Receiving Trolley

Neutral Trolley

**All Body Material** : Stainless Steel AISI 304

**Additional Features** : Thickness 1.5 mm with Supports supplied with 6 inch caster wheel Heavy Duty

Dimensions	Code
60x90x110cm	CGTT0001M



### Service Trolley 2Lvs

Neutral Trolley

**All Body Material** : Stainless Steel AISI 304

**Additional Features** : supplied with 4 inch caster wheel

Dimensions	Code
90x55x95cm	CGTT0022M



### Service Trolley 3Lvs

Neutral Trolley

**All Body Material** : Stainless Steel AISI 304

**Additional Features** : supplied with 4 inch caster wheel

Dimensions	Code
90x55x95cm	CGTT0003M

### Mobile Waste Bin Trolley

Neutral Trolley

**All Body Material** : Stainless Steel AISI 304

**Capacity** : 40 Lt

**Additional Features** : supplied with 4 inch caster wheel Heavy Duty with brakes

Dimensions	Code
66x83.5x170cm	CGTT4929M



COMET GLOBAL  
PREP LINE



# OUR CLIENTS





From innovative appliances to state-of-the-art technology, our range offers the tools to elevate your culinary experience. Transform your commercial kitchen into a hub of efficiency and creativity. We are committed to providing you with the highest quality and most advanced equipment to meet your needs.

Discover the possibilities and unlock a new level of culinary excellence with Comet Global

